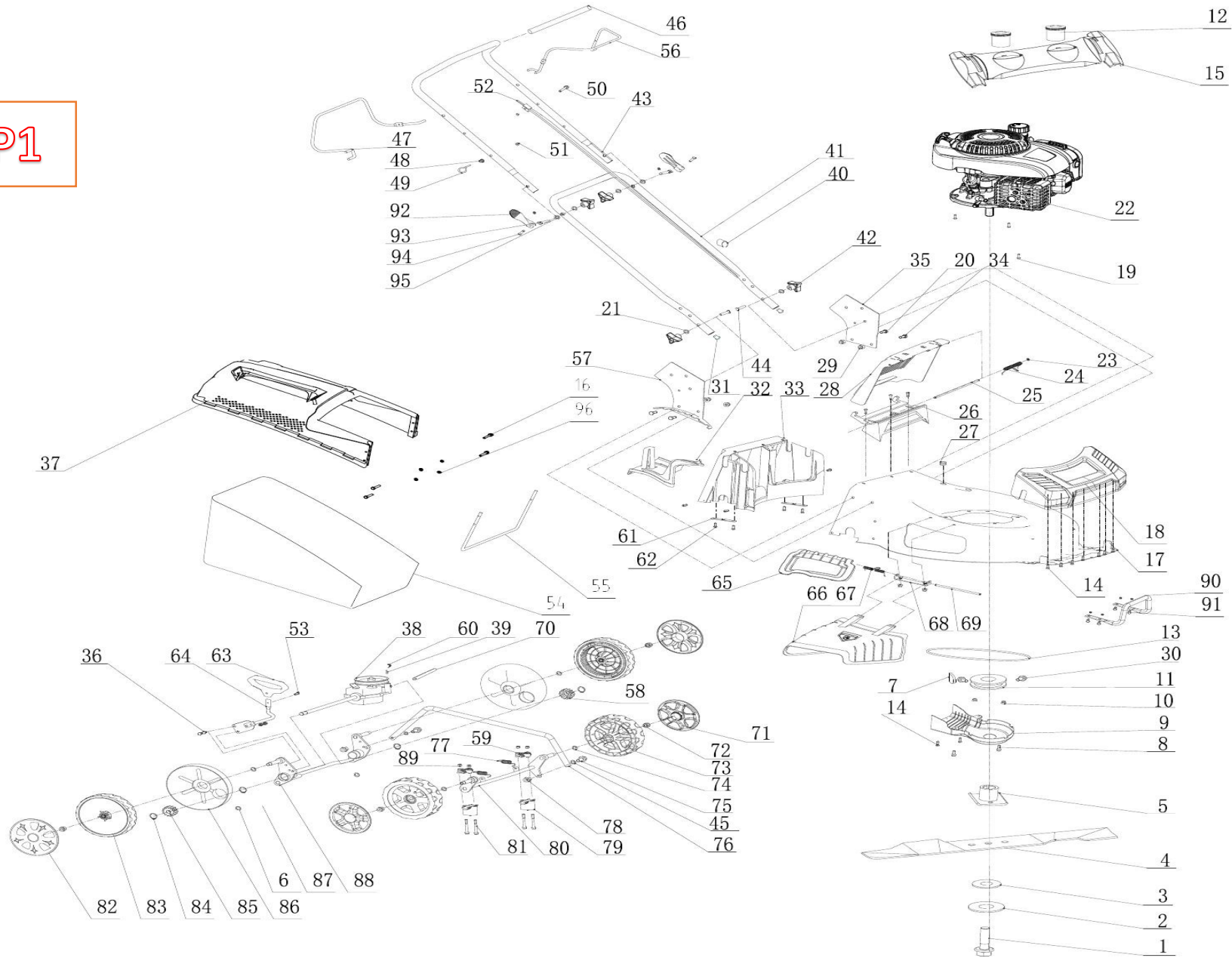


P1





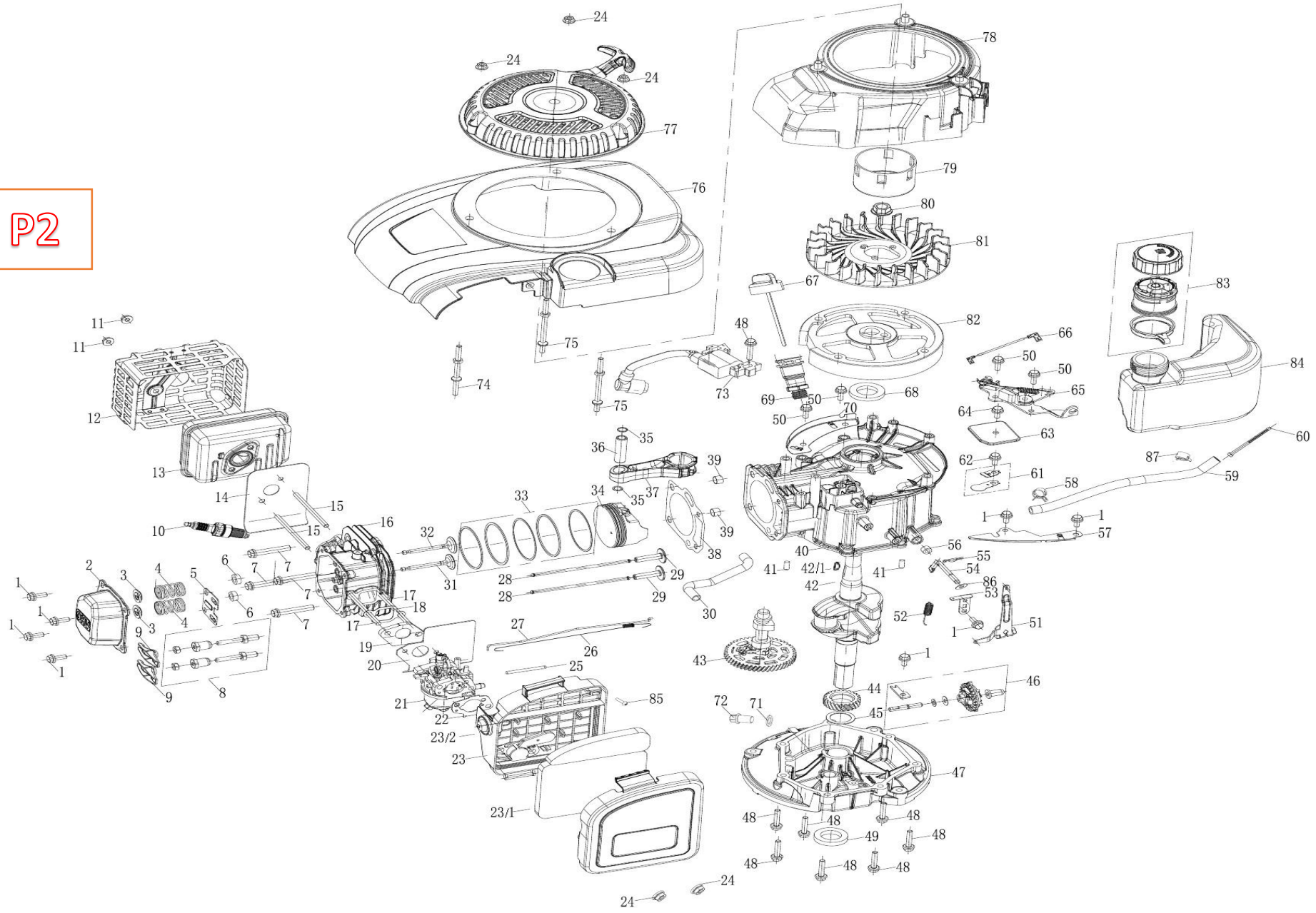
# CORTACESPED DUCATI DLM5303 REF. DLM5303

PAG	POS	REFERENCIA	DESCRIPCION	CANT	PAG	POS	REFERENCIA	DESCRIPCION	CANT
P1	1	DLM4601/1	TORNILLO CUCHILLA DLM4601/DLM5101T/DLM5301P/DLM5301/DLM5301E	1	P1	49	DLM4601/45	GUIA CUERDA ARRANQUE DLM4601/DLM5101T/DLM5301P/DLM5301/DLM5301E	1
P1	2	DLM4601/2	ARANDELA DLM4601/DLM5101T/DLM5301P/DLM5301/DLM5301E	1	P1	50	DLM5301P/50	PARAGOLPES DLM5301P/DLM5301	1
P1	3	DLM4601/3	ARANDELA CUCHILLA DLM4601/DLM5301P/DLM5301/DLM5301E	1	P1	51	DLM4601/48	TUERCA 6 DLM4601/DLM5101T/DLM5301P/DLM5301/DLM5301E	2
P1	4	DLM5301P/4	CUCHILLA DLM5301P/DLM5301/DLM5301E	1	P1	52	DLM4601/75	SUJETA CABLE DLM4601/DLM5301/DLM5301E	1
P1	5	DLM5303/5	PORTACUCHILLAS DLM5303	1	P1	53	DLM5301E/53	CABLE EMBRAGUE Y FRENO DLM5301E	1
P1	6	DLM5301/6	TRANSMISION DLM5301/DLM5301E	1	P1	54	DLM5301P/54	TELA SACO RECOGEDOR DLM5301P/DLM5301/DLM5301E	1
P1	7	DLM4601/15	CHAVETA POLEA DLM4601/5301/5301E	1	P1	55	DLM5301P/63	CHASIS RECOGEDOR DLM5301P/DLM5301/DLM5301E	1
P1	8	DLM4601/18	TORNILLO 6X16 DLM4601/DLM5301/DLM5301E	2	P1	56	DLM4601/43	PALANCA FRENO MOTOR DLM4601/DLM5101T/DLM5301P/DLM5301/DLM5301E	1
P1	9	DLM5301/9	TAPA CORREA DLM5301/DLM5301E	1	P1	57	DLM5301/57	SOPORTE MANILLAR DRCH DLM5301/DLM5301E	1
P1	10	DLM4601/10	TUERCA 6 DLM4601/DLM5101T/DLM5301P/DLM5301/DLM5301E	4	P1	58	DLM4601/91	TAPA MANILLAR IZQ DLM4601/DLM5301P/DLM5301	1
P1	11	DLM4601/11	POLEA CORREA DLM4601/DLM5301/DLM5301E	1	P1	59	DLM4601/92	TAPA MANILLAR DRCH DLM4601/DLM5301P/DLM5301	1
P1	12	DLM4601/54	TAPA RECOGEDOR DLM4601/DLM5301P/DLM5301/DLM5301E	1	P1	60	DLM5301/60	MUELLE TENSOR DLM5301/DLM5301E	1
P1	13	DLM5301/13	CORREA DLM5301/DLM5301E	1	P1	61	DLM5303/61	PLACA SUJECCION EJE TRASERO DLM5303	2
P1	14	DLM4601/14	TORNILLO DLM4601/DLM5301P/DLM5301/DLM5301E	19	P1	62	DLM5301P/62	TORNILLO 6,3*16 DLM5301P/DLM5301/DLM5301E	8
P1	15	DLM5301/15	TORNILLO 8*30 DLM5301/DLM5301E	1	P1	63	DLM5303/63	POMO PALANCA REGULACION ALTURA DLM5303	1
P1	16	DLM4601/84	TORNILLO 5X22 DLM4601/DLM5301P/DLM5301/DLM5301E	4	P1	64	DLM4601/78	PALANCA REGULACION ALTURA DLM4601/DLM5301/DLM5301E	1
P1	17	DLM5301/17	PLATO DE CORTE DLM5301/DLM5301E	1	P1	65	DLM5301P/65	TAPA SALIDA LATERAL DLM5301P/DLM5301/DLM5301E	1
P1	18	DLM5301P/18	EMBELLECEDOR DELANTERO DLM5301P/DLM5301/DLM5301E	1	P1	66	DLM5301P/66	TOBERA SALIDA LATERAL DLM5301P/DLM5301/DLM5301E	1
P1	19	DLM4601/19	TORNILLO DLM4601/DLM5101T/DLM5301P/DLM5301/DLM5301E	3	P1	67	DLM5101T/38	RESORTE TAPA LATERAL DLM5101T/DLM5301P/DLM5301/DLM5301E	1
P1	20	DLM4601/47	TORNILLO 6*10 DLM4601/DLM5301/DLM5301E	1	P1	68	DLM5101T/39	SOPORTE TAPA LATERAL DLM5101T/DLM5301P/DLM5301/DLM5301E	1
P1	21	DLM4601/70	ARANDELA DLM4601/DLM5101T/DLM5301P/DLM5301/DLM5301E	4	P1	69	DLM5101T/37	EJE TAPA LATERAL DLM5101T/DLM5301P/DLM5301/DLM5301E	1
P1	22	DLM5303M	MOTOR DLM5303	1	P1	70	DLM4601/90	ARANDELA DLM4601/DLM5301P/DLM5301/DLM5301E	2
P1	23	DLM4601/30	GRUPILLA DLM4601/DLM5101T/DLM5301P/DLM5301/DLM5301E	3	P1	71	DLM5301/71	EMBELLECEDOR RUEDA DEL DLM5301/DLM5301E	2
P1	24	DLM4601/31	MUELLE DEFLECTOR TRASERO DLM4601/DLM5301P/DLM5301/DLM5301E	1	P1	72	DLM4601/57	TUERCA 10 DLM4601/DLM5301P/DLM5301/DLM5301E	4
P1	25	DLM4601/32	EJE DEFLECTOR TRASERO DLM4601/DLM5301P/DLM5301/DLM5301E	1	P1	73	DLM5301/73	RUEDA DEL DLM5301/DLM5301E	2
P1	26	DLM5301P/26	SOPORTE TAPA TRASERA DLM5301P/DLM5301/DLM5301E	1	P1	74	DLM4601/59	ARANDELA DLM4601/DLM5101T/DLM5301P/DLM5301/DLM5301E	4
P1	27	DLM4601/24	PASACABLE DLM4601/DLM5301/DLM5301E	1	P1	75	DLM5101T/44	TORNILLO BARRA UNION DLM5101T/DLM5301P/DLM5301/DLM5301E	2
P1	28	DLM4601/33	TAPA TRASERA DLM4601/DLM5301P/DLM5301/DLM5301E	1	P1	76	DLM5301/76	BARRA UNION EJE DEL-TRAS DLM5301/DLM5301E	1
P1	29	DLM4601/27	TUERCA 8 DLM4601/DLM5101T/DLM5301P/DLM5301/DLM5301E	5	P1	77	DLM4601/93	PANEL DLM4601/DLM5301P/DLM5301	1
P1	30	DLM4601/50	TUERCA 5 DLM4601/DLM5301P/DLM5301/DLM5301E	4	P1	78	DLM4601/69	TUERCA 6 DLM4601/DLM5101T/DLM5301P/DLM5301/DLM5301E	4
P1	31	DLM4601/29	TAPON DLM4601/DLM5101T/DLM5301P/DLM5301/DLM5301E	2	P1	79	DLM5301/79	PLACA SUJECCION EJE DEL DLM5301/DLM5301E	2
P1	32	DLM5301/32	TAPA MULCHING DLM5301/DLM5301E	1	P1	80	DLM5301/80	EJE DEL DLM5301/DLM5301E	1
P1	33	DLM5301/33	TRASERA CORTE DLM5301/DLM5301E	1	P1	81	DLM5301P/52	TORNILLO 6*50 DLM5301P/DLM5301/DLM5301E	4
P1	34	DLM5301/34	TORNILLO 8*20 DLM5301/DLM5301E	3	P1	82	DLM4601/62	EMBELLECEDOR RUEDA TRAS DLM4601/DLM5301P/DLM5301/DLM5301E	2
P1	35	DLM5301P/35	SOPORTE MANILLAR IZQ DLM5301P/DLM5301/DLM5301E	1	P1	83	DLM4601/63	RUEDA TRASERA DLM4601/DLM5301/DLM5301E	2
P1	36	DLM4601/53	TORNILLO 6*14 DLM4601/DLM5301P/DLM5301/DLM5301E	2	P1	84	DLM4601/64	GRUPILLA DLM4601/DLM5301/DLM5301E	2
P1	37	DLM4601/55	TORNILLO POMO RAPIDO DLM4601/DLM5301P/DLM5301/DLM5301E	2	P1	85	DLM4601/65	PIÑON DRCH DLM4601/DLM5301/DLM5301E	1
P1	38	DLM4601/7	PASADOR POMO AJUSTE RAPIDO DLM4601/DLM5301P/DLM5301/DLM5301E	2	P1	86	DLM4601/66	TAPA INTERIOR RUEDA DLM4601/DLM5301/DLM5301E	2
P1	39	DLM5303/39	POMO AJUSTE RAPIDO MANILLAR DLM5303	2	P1	87	DLM4601/85	RODAMIENTOS EJE TRACCION DLM4601/DLM5301/DLM5301E	2
P1	40	DLM4601/39	CLIP CABLES DLM4601/DLM5101T/DLM5301P/DLM5301/DLM5301E	1	P1	88	DLM5301/88	EJE TRAS DLM5301/DLM5301E	1
P1	41	DLM5303/41	MANILLAR INFERIOR DLM5303	1	P1	89	DLM5301P/39	TUERCA 6 DLM5301P/DLM5301/DLM5301E	4
P1	42	DLM5303/42	POMO MANILLAR DLM5303	4	P1	90	DLM5301/90	MUELLE TENSION DLM5301/DLM5301E	2
P1	43	DLM5303/43	MANILLAR SUPERIOR DLM5303	1	P1	91	DLM5301/91	SOPORTE EJE DEL DLM5301/DLM5301E	2
P1	44	DLM4601/28	TORNILLO DLM4601/DLM5101T/DLM5301P/DLM5301/DLM5301E	2	P1	92	DLM4601/74	PIÑON IZQ DLM4601/DLM5301/DLM5301E	1
P1	45	DLM5101T/50	ARANDELA DLM5101T/DLM5301P/DLM5301/DLM5301E	2	P1	93	DLM4601/42	TORNILLO DLM4601/DLM5101T/DLM5301P/DLM5301/DLM5301E	1
P1	46	DLM4601/25	ESPUMA MANILLAR DLM4601/DLM5101T/DLM5301P/DLM5301/DLM5301E	1	P1	94	DLM4601/76	PASADOR PIÑON DLM4601/DLM5301/DLM5301E	2
P1	47	DLM5303/47	PALANCA TRACCION DLM5303	1	P1	95	DLM4601/94	SOPORTE BEBIDAS DLM4601/DLM5301P/DLM5301/DLM5301E	2
P1	48	DLM4601/46	TUERCA DLM4601/DLM5101T/DLM5301P/DLM5301/DLM5301E	1	P1	96	DLM4601/95	TORNILLO DLM4601/DLM5301P/DLM5301	4

\*LA IMAGEN PUEDE NO CORRESPONDER EXACTAMENTE CON EL MODELO \*\* SUJETO A MODIFICACIONES

VERSION 3.0

P2





**CORTACESPED DUCATI DLM5303 REF. DLM5303**

PAG	POS	REFERENCIA	DESCRIPCION	CANT	PAG	POS	REFERENCIA	DESCRIPCION	CANT
P2	1	DLM5303M/1	TORNILLO 6X12 DLM5303	8	P2	43	DLM5303M/43	ARBOL DE LEVAS DLM5303	1
P2	2	DLM5303M/2	TAPA VALVULAS DLM5303	1	P2	44	DLM5303M/44	PIÑON CIGÜEÑAL-ABOL DE LEVAS DLM5303	1
P2	3	DLM4601M/25	PLATILLO VALVULA ADMISION DLM4601/DLM5101T/DLM5301/DLM5301P	2	P2	45	DLM4601M/42	ARANDELA AJUSTE CIGÜEÑAL DLM4601/DLM5101T/DLM5301P/DLM5301	1
P2	4	DLM5301M/23	MUELLE VALVULA DLM5301	2	P2	46	DLM5301M/17	PIÑON REGULADOR COMPLETO DLM5301	1
P2	5	DLM5303M/5	CHAPA GUIA VALVULAS DLM5303	1	P2	47	DLM5303M/47	TAPA CARTER DLM5303	1
P2	6	DLM4601M/24	ASIENTO RETEN DLM4601/DLM5101T/DLM5301P	2	P2	48	DLM5303M/48	TORNILLO 6X30 DLM5303	8
P2	7	DLM4601M/32	TORNILLO 8*45 DLM4601/DLM5101T/DLM5301P	4	P2	49	DLM4601M/46	RETEN CIGÜEÑAL TAPA DLM4601/DLM5101T/DLM5301P	1
P2	8	DLM5303M/8	KIT REGULACION BALANCINES DLM5303	2	P2	50	DLM4601M/30	TORNILLO 6*16 DLM4601/DLM5101T/DLM5301P	4
P2	9	DLM5303M/9	BALANCINES DLM5303	2	P2	51	DLM5303M/51	BRAZO REGULADOR DLM5303	1
P2	10	DLM5301M/56	BUJIA DLM5301	1	P2	52	DLM5303M/52	MUELLE REGULADOR DLM5303	1
P2	11	DLM5301M/44	TUERCA 6 DLM5301	2	P2	53	DLM5303M/53	CONTROL ACELERACION DLM5303	1
P2	12	DLM5303M/12	REJILLA SILENCIOSO DLM5303	1	P2	54	DLM5303M/54	EJE REGULADOR DLM5303	1
P2	13	DLM5303M/13	SILENCIOSO DLM5303	1	P2	55	DLM5301M/5	PASADOR DLM5301	1
P2	14	DLM5303M/14	JUNTA SILENCIOSO DLM5303	1	P2	56	DLM5301M/2	RETEN EJE REGULADOR DLM5301	1
P2	15	DLM5303M/15	ESPARRAGO SILENCIOSO DLM5303	2	P2	57	DLM5303M/57	CHAPA AIREACION 1 DLM5303	1
P2	16	DLM5303M/16	CULATA DLM5303	1	P2	58	DLM4601M/50	CLIP TUBO DLM4601/DLM5101T/DLM5301P	1
P2	17	DLM4601M/33	ESPARRAGO 6*92 DLM4601/DLM5101T/DLM5301P	2	P2	59	DLM5303M/59	TUBO COMBUSTIBLE DLM5303	1
P2	18	DLM5303M/18	JUNTA ADMISION DLM5303	1	P2	60	DLM4601M/79	FILTRO COMBUSTIBLE DLM4601/DLM5101T/DLM5301P	1
P2	19	DLM5303M/19	SEPARADOR TERMICO DLM5303	1	P2	61	DLM5303M/61	LENGÜETA RESPIRADERO DLM5303	1
P2	20	DLM5303M/20	JUNTA CARBURADOR DLM5303	1	P2	62	DLM4601/12	TORNILLO 6*7 DLM4601/DLM5301E	1
P2	21	DLM5303M/21	CARBURADOR DLM5303	1	P2	63	DLM5303M/63	FILTRO RESPIRADERO DLM5303	1
P2	22	DLM4601M/34	JUNTA FILTRO AIRE DLM4601/DLM5101T/DLM5301P/DLM5301	1	P2	64	DLM5301M/18	TORNILLO 6*12 DLM5301	1
P2	23	DLM5303M/23	ANCLAJE FILTRO DE AIRE DLM5303	1	P2	65	DLM5303M/65	FRENO MOTOR DLM5303	1
P2	23/1	DLM5303M/23/1	ELEMENTO FILTRO DE AIRE DLM5303	1	P2	66	DLM5303M/66	CABLE MASA DLM5303	1
P2	23/2	DLM5303M/23/2	CEBADOR DLM5303	1	P2	67	DLM5303M/67	TAPON VARILLA NIVEL DLM5303	1
P2	24	DLM4601M/73	TUERCA M6 DLM4601/DLM5101T/DLM5301P/DLM5301	5	P2	68	DLM5303M/68	RETEN CIGÜEÑAL LADO VOLANTE DLM5303	1
P2	25	DLM5303M/25	TUBO SOBRADERO DLM5303	1	P2	69	DLM4601M/22	TUBO VARILLA NIVEL DLM4601/DLM5101T/DLM5301P	1
P2	26	DLM5301M/34	MUELLE RETORNO ACELERADOR DLM5301	1	P2	70	DLM5303M/70	CHAPA AIREACION 2 DLM5303	1
P2	27	DLM5303M/27	VARILLA ACELERADOR DLM5303	1	P2	71	DLM5301M/15	ARANDELA VACIADO DLM5301	1
P2	28	DLM5303M/28	VARILLA EMPUJADORA DLM5303	2	P2	72	DLM5301M/16	TORNILLO VACIADO DLM5301	1
P2	29	DLM5303M/29	TAQUE DLM5303	2	P2	73	DLM5303M/73	BOBINA DE ARRANQUE DLM5303	1
P2	30	DLM5303M/30	TUBO RESPIRADERO DLM5303	1	P2	74	DLM5303M/74	ESPARRAGO BOBINA DLM5303	1
P2	31	DLM5303M/31	VALVULA ADMISION DLM5303	1	P2	75	DLM5303M/75	ESPARRAGO ARRANQUE DLM5303	2
P2	32	DLM5303M/32	VALVULA ESCAPE DLM5303	1	P2	76	DLM5303M/76	EMBELLECEDOR MOTOR DLM5303	1
P2	33	DLM5301PM/17	JUEGO SEGMENTOS DLM5301P	1	P2	77	DLM5303M/77	ARRANCADOR COMPLETO DLM5303	1
P2	34	DLM5303M/34	PISTON DLM5303	1	P2	78	DLM5303M/78	CARCASA AIREACION DLM5303	1
P2	35	DLM5301M/13	GRUPILLA PISTON DLM5301	2	P2	79	DLM5303M/79	POLEA ARRANCADORA DLM5303	1
P2	36	DLM5303M/36	BULON PISTON DLM5303	1	P2	80	DLM5301M/63	TUERCA DLM5301	1
P2	37	DLM5303M/37	BIELA DLM5303	1	P2	81	DLM5303M/81	VENTILADOR DLM5303	1
P2	38	DLM5303M/38	JUNTA CULATA DLM5303	1	P2	82	DLM5301M/60	VOLANTE DE ARRANQUE DLM5301	1
P2	39	DLM5301M/49	CASQUILLO CULATA DLM5301	2	P2	83	DLM4601M/62	TAPON DEPOSITO COMBUSTIBLE DLM4601/DLM5101T/DLM5301/DLM5301P	1
P2	40	DLM5303M/40	CILINDRO DLM5303	1	P2	84	DLM5303M/84	DEPOSITO COMBUSTIBLE DLM5303	1
P2	41	DLM5301M/39	CASQUILLO TAPA CARTER DLM5301	2	P2	85	DLM4601M/69	TORNILLO 4.2*16 DLM4601/DLM5101T/DLM5301P	1
P2	42	DLM5303M/42	CIGÜEÑAL DLM5303	1	P2	86	DLM5303M/86	ARANDELA DLM5303	1
P2	42/1	DLM5303M/42/1	CHAVETA VOLANTE DE ARRANQUE DLM5303	1	P2	87	DLM4601M/76	CLIP TUBO DLM4601/DLM5101T/DLM5301P	1